

# DSP4100/2K

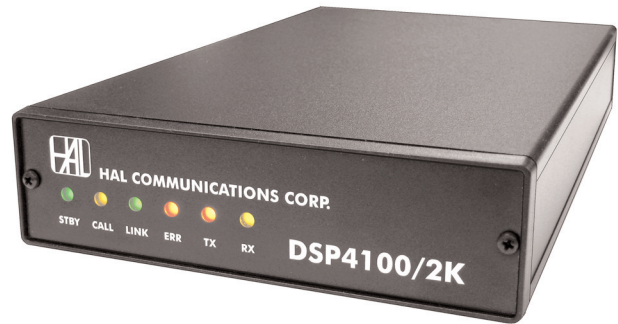
## HF Radio DSP Modem

with CLOVER 2000

Voice bandwidth

Adaptive ARQ

3000 bits/sec



## Specifications

### CLOVER 2000

Data Format	8-tones, 8-bit transparent
Bandwidth	2000 Hz, (500-2500 @ -50 dB)
Symbol Rate	62.5 per second
Error Correction Coding	Reed Solomon: 60, 75, or 90%
ARQ Modulation	BPSM, QPSM, 8PSM, 8P2A, 16P4A
ARQ Protocol	Auto Adaptive, Full-Duplex
ARQ FrameTime	5.44 seconds
Adaptive ARQ Control	Measure S/N and Phase on all data; set TX modulation
Raw Data Rate	3000 bits/sec (before error correction)
ARQ Data Rate	224 to 2000 bits/sec (error corrected)
Broadcast Data Rate	112 to 1336 bits/sec

### AFSK WAVEFORMS

FSK Tones	500-3000 Hz programmable
TTY Codes	Baudot and ASCII
TTY Rates	45, 50, 57, 75, 100, and 110 Baud
TOR Codes	CCIR-476, CCIR-625
TOR Modes	ARQ, FEC, and SEL-FEC
TOR Rate	100 Baud
P-Mode	Auto-ARQ, FEC
P-Mode Rates	100 / 200 Baud

### HARDWARE

Cabinet	Extruded Aluminum 5.5x8.7x1.5 in.
DSP	DSP56303 @ 81.92 MHz
CPU	68EC000 @ 20.48 MHz
Power	10-18 VDC @ 250 ma
I/O Interface	Dual Serial RS-232 9.6-57.6 kbps
Radio Connection	TX Audio, RX Audio, PTT

## OEM Products

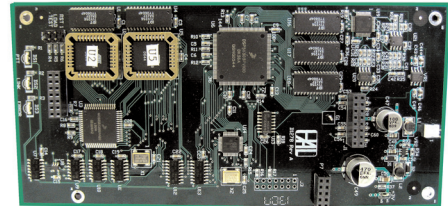
Reseller Hardware IDs

Factory Direct Circuit Boards

Customized Software

Transceiver Cable Sets

## Embedded Solutions



## Software

CLOVER Mail for HF email

DSPWin File Transfer & Chat

Free Firmware Updates

AT and 8000 Command Sets



**HAL Communications Corp.**

1201 W Kenyon Road  
P.O. Box 365  
Urbana IL 61803-0365  
USA

www.halcomm.com  
halcomm@halcomm.com  
Tel: (217) 367-7373  
Fax: (217) 367-1701